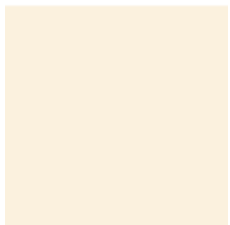


THE TRIP AROUND THE WORLD COLLECTION

Trip Around the World, RJR's newest line of reproduction fabrics from the Michigan State University Museum, features a colorful mix of twenty-four prints, eight solids and six conversationals from the late 1920s and 1930s. The collection was recreated primarily from prints discovered in the *Trip Around the World* quilt made by Laura May Clarke in 1932. Rick Cohan, CEO of RJR Fabrics explains the intent behind the collection, "In order to make this reproduction line unique from past collections, we decided to select one quilt and reproduce every fabric featured in the quilt. Quilters will now be able to recreate the *Trip Around the World* in the original fabric designs." In addition, due to the popularity of 1930s conversationals, six novelty designs, drawn from antique 1930s prints, were incorporated into the line.

The *Trip Around the World* quilt is part of the Clarke Family quilt collection, one of the largest family quilt collections housed in the Michigan State University Museum. The collection is comprised of forty-five quilts and quilt tops completed between 1926 and 1946 by Bozena Vilhemina Clarke, her daughter, Laura May Clarke and daughter-in-law, Emilie Ann Clarke. In addition to the quilts, the collection includes numerous hand-made templates and patterns, unique hand colored graphs of planned quilts, newspaper and magazine clippings and personal inventory notes written by the quilters.

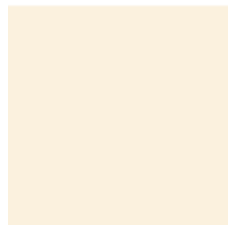
Royalties earned from the sale of the fabric help to support the MSU Museum and its dedication to textile research and quilt exhibition.



Fabric 1 9617-133



Fabric 2 4336-1



Fabric 3 9617-133



Fabric 4 4336-2



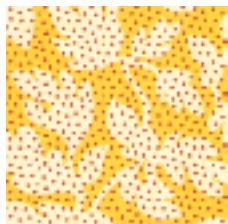
Fabric 5 4336-3



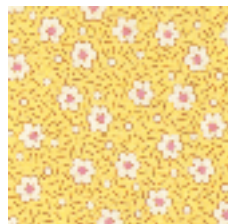
Fabric 6 9617-137



Fabric 7 4336-4



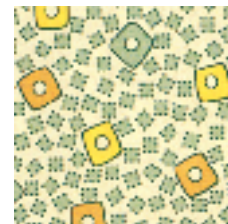
Fabric 8 4336-5



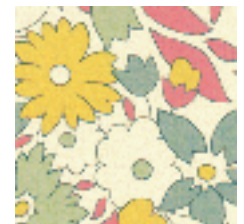
Fabric 9 4336-6



Fabric 10 9617-139



Fabric 11 4336-7



Fabric 12 4336-8



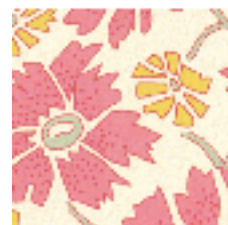
Fabric 13 4336-9



Fabric 14 9617-134



Fabric 15 4336-10



Fabric 16 4336-11



Fabric 17 4336-12



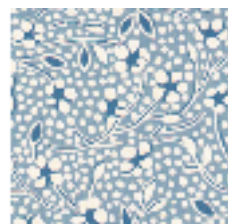
Fabric 18 9617-135



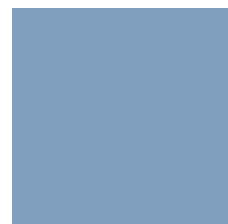
Fabric 19 4336-13



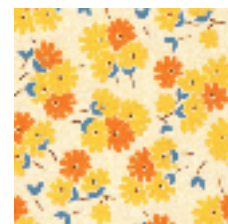
Fabric 20 4336-14



Fabric 21 4336-15



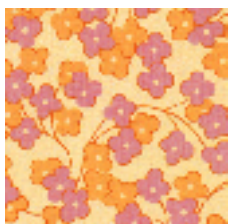
Fabric 22 9617-138



Fabric 23 4336-16



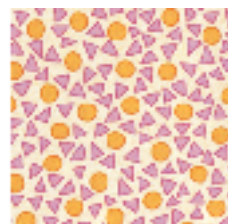
Fabric 24 4336-17



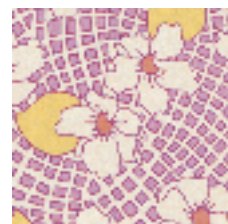
Fabric 25 4336-18



Fabric 26 9617-140



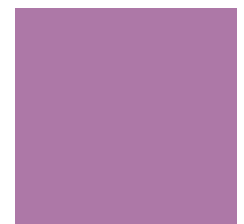
Fabric 27 4336-19



Fabric 28 4336-20



Fabric 29 4336-21



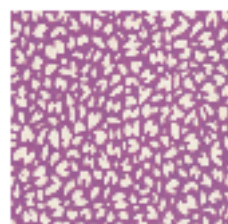
Fabric 30 9617-136



Fabric 31 4336-22



Fabric 32 4336-23



Fabric 33 4336-24



Fabric 34 9617-137



Binding & Backing 9617-137