

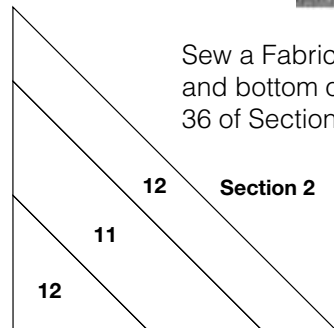
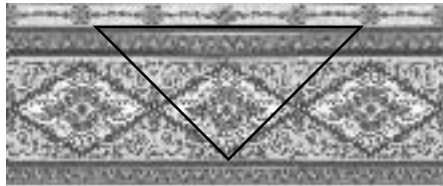
To Construct, Section 2 of Blocks 1 and 2

Cutting directions for Template E and G.

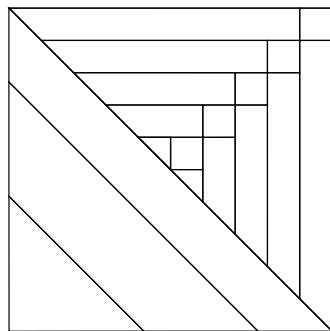
Cut 36 of Template E from the narrow border strips as illustrated.



Cut 36 of Template G from the large floral border strip as illustrated.



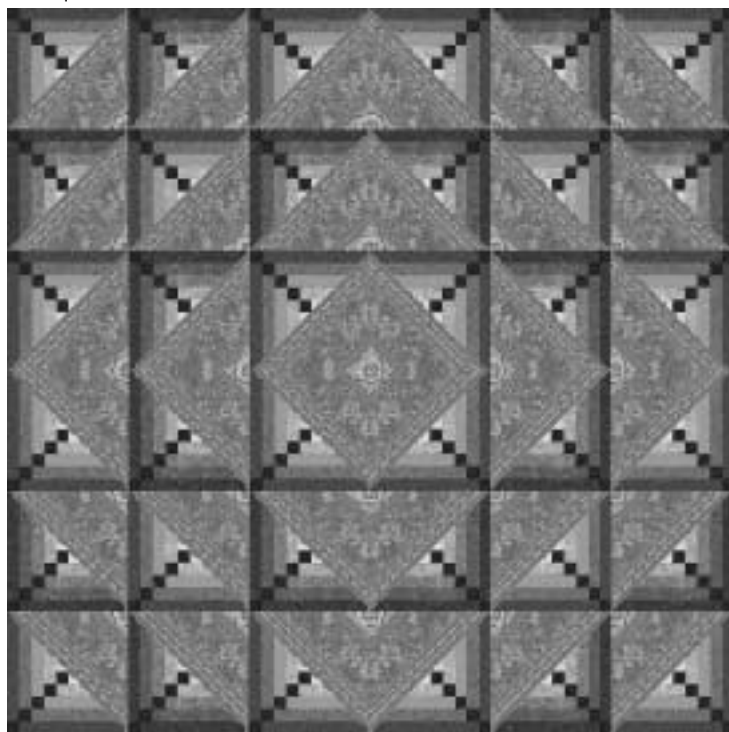
Sew a Fabric 12 Template E and G the the top and bottom of a Fabric 11 Template F. Make 36 of Section 2.



Sew section 2 to 20 of Block 1, Section 1, and 16 of Block 2, Section 1, as illustrated.

Make 20 of Block 1 and 16 of Block 2

Sew blocks into rows, then sew rows to make the body of the quilt.



1st Border

From the narrow border stripe, carefully cut 4 strips $2\frac{1}{8}$ " x 72" as illustrated. Fold each border in half, dividing the border into 2 mirror-image sections. Press on fold.



2nd Border

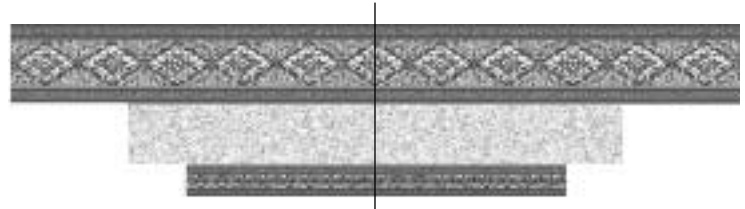
Fold the 4 strips $3\frac{3}{8}$ " x $2\frac{1}{8}$ yards in half and press on fold.

3rd Border

From the floral border stripe, carefully cut 4 strips $4\frac{5}{8}$ " x length of fabric where indicated. Fold each border in half, dividing the border into 2 mirror-image sections.

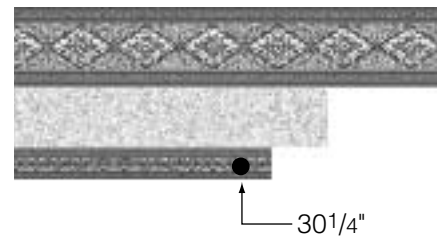


Open the folds and sew 3 border strips together matching fold lines.



Border Units
Make 4

Fold the quilt in half and measure. It should measure $30\frac{1}{4}$ ". If your measurement is different, use your measurements. Fold the border unit in half on the fold line. The design motifs should be precisely matched. Measure over $30\frac{1}{4}$ " from the center fold, and place a dot at that point, $\frac{1}{4}$ " up from the edge of the border.



Lay a ruler, with the 45° marking along the top of the border, and the edge of the ruler through the center of the dot. Cut as shown in illustration below.

