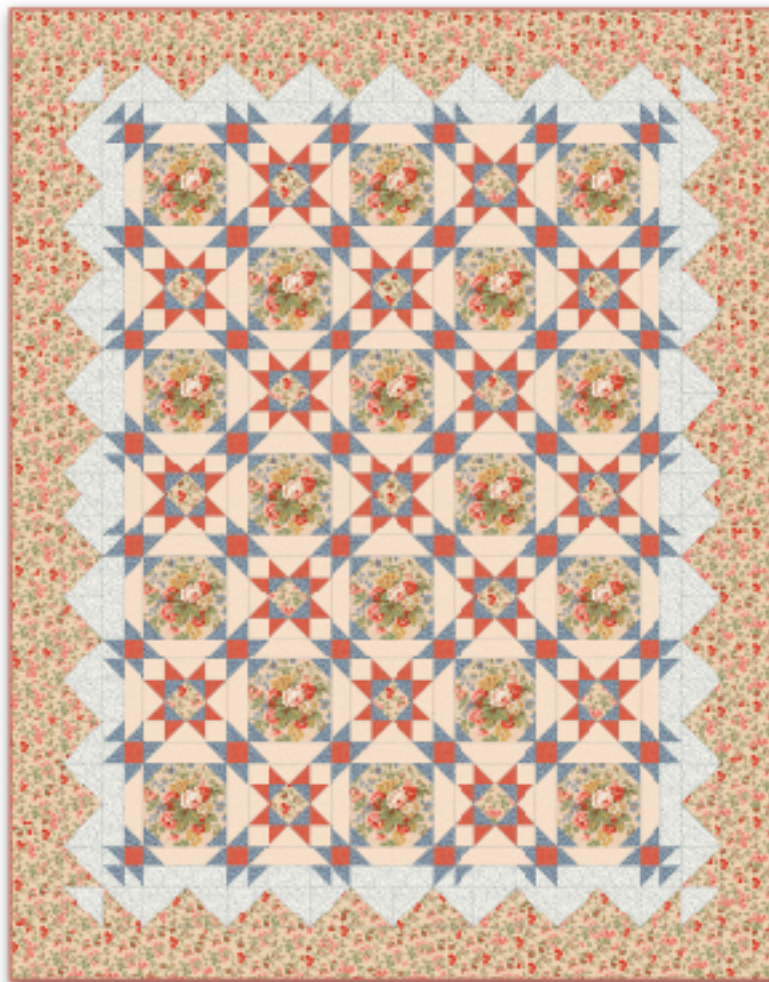










# REGATTA QUILT Colorway 1

by Laura Boehnke • Finished Quilt: 74 x 94"



## Fabric Requirements for Colorway 1

Fabric Swatch	Style #	Description	Yardage
	4943-1	large floral print	3 1/2 yards
	4948-1	peach print	2 3/4 yards
	3301-2	coral print	1 yard
	4951-2	blue print	2 yards
	4952-11	white print	2 yards
	4947-1	peach floral print	3 1/4 yards
	3301-2	binding	3/4 yard
	4946-1	backing	5 1/2 yards
80" x 100" batting			

## Cutting Instructions for Colorway 1

### From large floral print, cut:

(18) – 8 1/2" squares for snowball block

**Designer note:** Each square needs to be cut so that the floral design is centered. I made a square template from clear plastic and outlined the design on top of the template. I could then easily make the same placement for each motif I cut from the fabric.

### From blue print, cut:

(68) – 2 1/2" squares for star block  
 (184) – 2 1/2" squares for sashing  
 (72) – 2 1/2" squares for snowball block  
 (16) – 2 7/8" squares, each cut in half diagonally, for a total of 32 small triangles

### From peach print, cut:

(68) – 2 1/2" squares for star block  
 (68) – 2 1/2" x 4 1/2" rectangles for star block  
 (82) – 2 1/2" x 8 1/2" rectangles for sashing

### From coral print, cut:

(136) – 2 1/2" squares for star block  
 (48) – 2 1/2" squares  
 (10) – 2 1/2" x 42" strips for binding

### From white print, cut:

(24) – 2 1/2" x 8 1/2" rectangles  
 (16) – 2 7/8" squares, each cut in half diagonally, for a total of 32 small triangles  
 (35) – 4 7/8" squares, each cut in half diagonally, for a total of 70 medium triangles  
 (1) – 5 1/4" square, cut in half diagonally, for a total of 2 large triangles

### From peach floral print, cut:

(17) – 4 1/2" squares for star block  
 (1) – 5 1/4" square, cut in half diagonally, for a total of 2 large triangles  
 (34) – 4 7/8" squares, each cut in half diagonally, for a total of 68 medium triangles  
 (2) – 5 1/2" x 64 1/2" outer border strips  
 (2) – 5 1/2" x 94 1/2" outer border strips