

Cutting E, E (r) and K (r) from Theme Fabrics

To create the kaleidoscope effect make sure to cut mirror-imaged triangles from the theme fabric.

1. Place plastic E on selected mirror-imaged motif in fabric # 9. Carefully mark the pattern lines on the plastic template to find the reverse (r) of E, as shown in **Figure # 14**. With the template in place on the fabric, carefully draw around the template and cut the piece. Cut 8 identical E triangles.
2. With the E (r) template in place on the fabric repeat step 1. Cut 8 identical E(r) triangles.
3. Place plastic K on selected mirror-imaged motif in fabric # 11. Carefully mark the pattern lines on the plastic template to find the reverse (r) of K. Refer to the picture in **Figure # 14** for an example on how to align the fabric. With the template in place on the fabric, carefully draw around the template and cut the piece. Cut 2 identical K triangles.
4. With the K(r) template in place on the fabric repeat step 3. Cut 2 identical K(r) triangles.
5. Label all units accordingly and set aside for Piecing the Wedge Units.



4. Piece the ABCD unit to the EF unit and their respective reverse units in the same manner. Make 8 units.
5. Piece the ABCDEF unit to the GHI unit and their respective reverse units in the same manner. Make 8 units.
6. Piece the completed ABCDEFGHI unit to its reverse unit along the straight seam. When complete, the regular unit will be on the left and the reverse unit will be on the right. Make 8 sets.
7. Piece J to the wedge to complete the triangle. Make sure the finished wedge unit looks like **Figure # 16**.

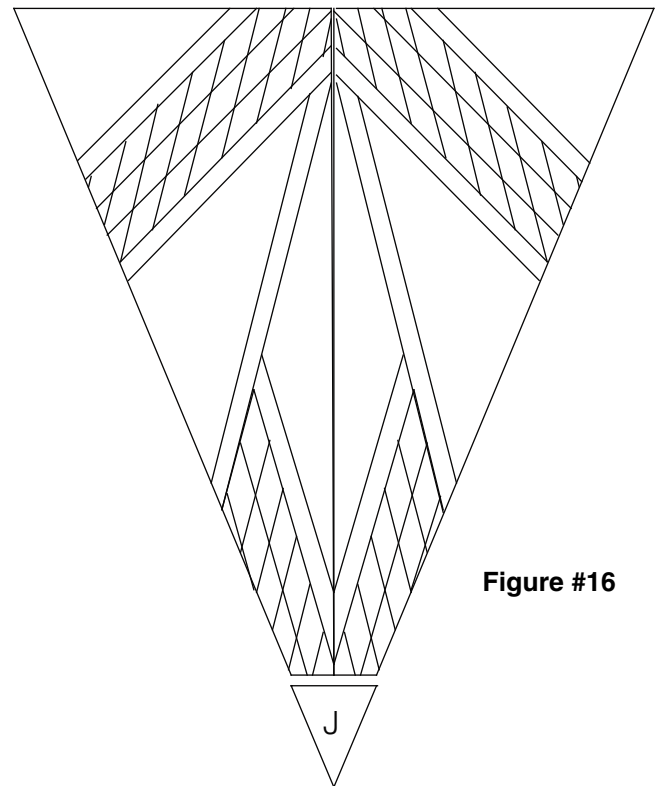
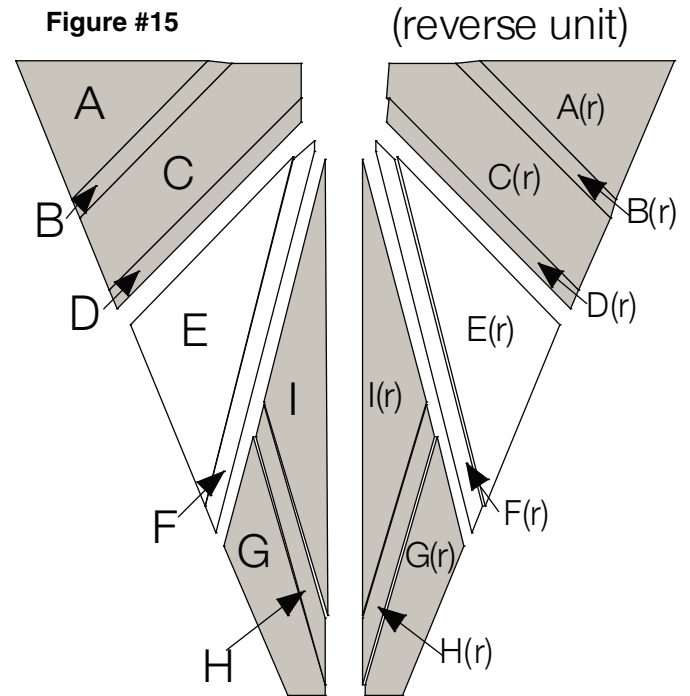


Figure #16

Piecing the Wedge Units

Refer to **Figure #15** for details.

1. Piece together units A, B, C & D and their respective reverse units in the same manner. Make 8 units.
2. Piece together units E & F and their respective reverse units in the same manner. Make 8 units.
3. Piece together units G, H & I and their respective reverse units in the same manner. Make 8 units.