

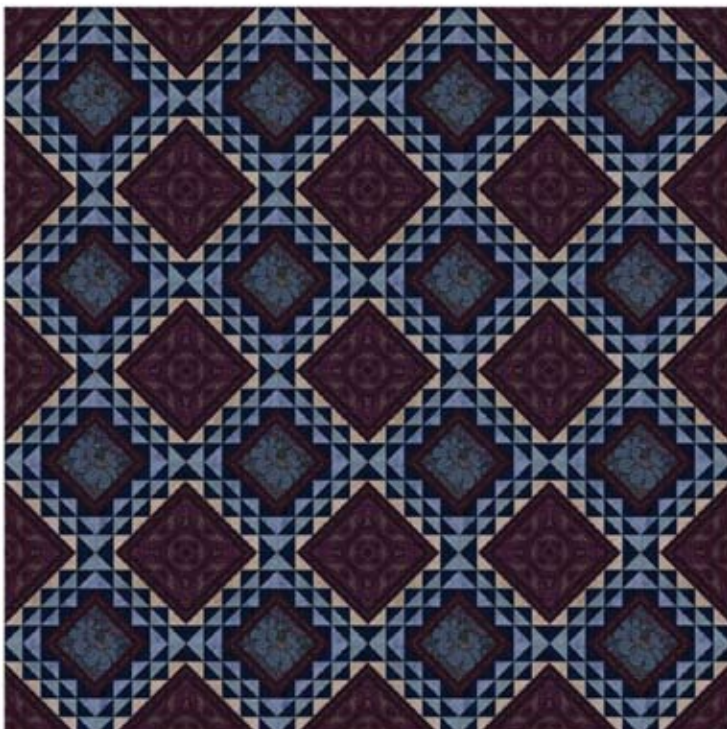
- Sew four flat-top triangles to the sides of Section 1 to create Section 2 as shown in **Diagram 12**. Repeat 16 (25) times.

13. Complete the Blocks



**Diagram 13**

- Sew four triangles (piece D) cut from the border fabric to the sides of Section 2 to create the block as shown in **Diagram 13**. Repeat 16 (25) times.



**Diagram 14**

14. Assembling the Quilt

To assemble the quilt, sew 4 (5) rows of 4 (5) blocks and then sew the rows together to form the center of the quilt now measuring  $60\frac{1}{2}$ " X  $60\frac{1}{2}$ " ( $75\frac{1}{2}$ " X  $75\frac{1}{2}$ " ). Shown in **Diagram 14**.



**Diagram 15**

15. Adding the Borders

Cut four strips -  $27\frac{7}{8}$ "x 92" ( $27\frac{7}{8}$ "x 107") from the border stripe fabric centering the facing double hearts as show in **Diagram 15** to use as the first border to the quilt.



**Diagram 16**

16. Cut four strips for the third and last border  $51\frac{1}{2}$ " x 92" ( $51\frac{1}{2}$ " x 107" ) from the border print fabric centering the largest stripe shown in **Diagram 16**.