

template to use as a guide for cutting the remaining pieces. Carefully draw around the template and cut out the piece. Repeat 16 (25) times for a total of 16 (25) pieces. (Approximately one-half of the squares will have their flowers reversed.)

5. For piece B, follow Jinny's instruction for bordering a square quilt, Piece A.

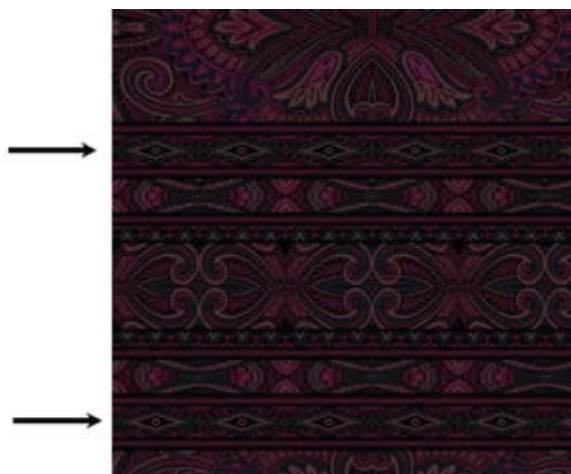


Diagram 1

- Cut a $1\frac{3}{8}$ " strip from the border print fabric centering the diamond shapes shown in **Diagram 1** in the center of the strip.
- Place the strip of the border print across the middle of the square (piece A), centering a motif from the border at the exact center of the piece as shown in **Diagram 2**. (Measuring across the middle as opposed to the edge is more accurate.)



Diagram 2

- Use the template created for the piece to mark and cut the miter along both of the edges. (If you have centered a motif from the border print correctly in the middle of the square the designs should match at the edges.)

- Mark some portion of the design directly onto the template to use as a guide for cutting the remaining pieces. Cut 64 (100) identical pieces, making sure that the design on the border print is exactly the same on all 64 (100) pieces four for each of the 16 (25) blocks.

6. Piece C is rotary cut. Cut strips across the width of fabric (from selvedge to selvedge).

- 10 (16) - $2\frac{3}{8}$ " strips of fabric #1
- 8 (13) - $2\frac{3}{8}$ " strips of fabric #2
- 24 (38) - $2\frac{3}{8}$ " strips of fabric #3
- Fabric #4 will be 30" wide or less depending on the accuracy of cutting the second border from this fabric. Cut 11 (17) - $2\frac{3}{8}$ " strips from the remaining width (from selvedge to cut edge) of fabric #4.
- Cut $2\frac{3}{8}$ " squares from all strips.

You will need:

- 160 (250) squares from fabric #1
- 128 (200) squares from fabric #2 and #4
- 384 (600) squares from fabric #3
- Cut all squares in half diagonally to form half square triangles.
- 320 (500) half square triangles from fabric #1
- 256 (400) half square triangles from fabric #2 and #4
- 768 (1200) half square triangles from fabric #3

7. Piece D, center the template on one of the motifs in the border print fabric, making sure that a line from the border print falls just inside the sewing line on the long side of the triangle template.

- If you want to see what a square of the motif will look like before actually cutting the pieces, position the template onto the fabric, then place two mirrors on the two short sides of the triangle so they meet at a right angle. Carefully remove the template to see what the finished square will look like. By simply placing the template in a slightly different place on the fabric many different squares can be cut from the same border strip.
- Mark some portion of the design chosen directly onto the template to use as a guide for cutting the remaining pieces. Carefully draw around the template and cut the pieces out. Repeat 64 (100) times (four for each of the 16 (25) blocks).

8. Making Blocks

Create Unit 1



Diagram 3
Unit 1