

Add the Borders

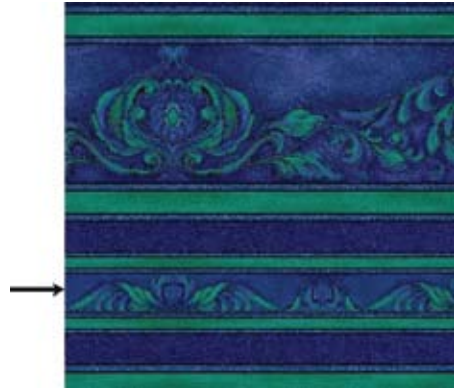


Figure C

1. To add the first border to the quilt cut four strips - $2\frac{1}{4}$ " X 96" ($2\frac{1}{4}$ " X 110") from the border stripe fabric centering the stripe shown in **Figure C**.

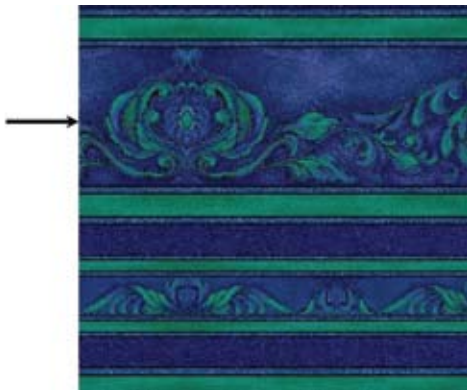


Figure D

2. Cut the third and last border 5" X 96" (5" X 110") from the border print fabric centering the largest stripe shown in **Figure D**.



Figure E

3. Create four strip sets of border strips by first sewing the strips cut for the border from Fabric number 1 in **Step 1** to the strips cut in **Step 11**. Next add the strips cut in **Step 16** to the strips cut in **Step 1**. The strip set order is shown in **Figure E**. Center the motifs from the border print fabrics within your strip sets.

4. Then follow Jinny's instruction for bordering a square quilt:

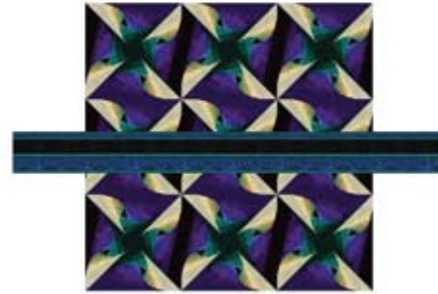


Figure F

- Place a strip set across the middle of the quilt or block, centering a motif from the border print at the exact center of the piece as shown in **Figure F**. (Measuring across the middle as opposed to the edge is more accurate, and will keep the quilt from "ruffling" at the edges.)

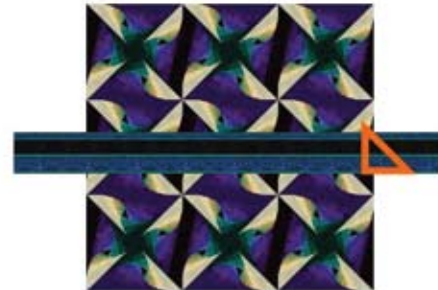


Figure G

- Use a right angle triangle to mark the miter along one of the edges, making sure to leave enough for seam allowance as shown in **Figure G**.
- Carefully pick up the mitered edge of the border strip set and bring it over to the other end of the border strip set at the opposite edge of the quilt, making sure that the design matches. (If you have centered a motif from the border print in the middle of the quilt the designs should match at the edges.) Cut the second miter.
- Using this first mitered piece as a guide, cut three more identical pieces, making sure that the design on the border print is exactly the same on all four strip sets.
- Then sew the mitered strip sets onto the quilt starting and stopping $\frac{1}{4}$ " from each side. Then sew the mitered corners.

Layer the backing, batting, and quilt top; baste. Quilt, bind, and finish as desired.