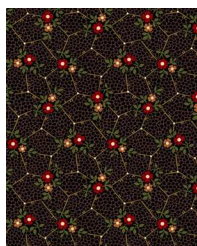


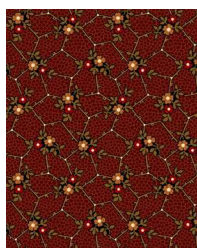
# Fabric Yardage



**5216-01**  
1-7/8 YARDS



**5217-01**  
2-1/8 YARDS



**5217-11**  
1/4 YARD



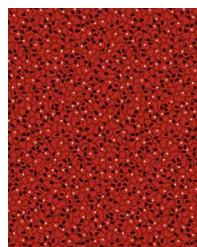
**5219-01**  
3/8 YARD



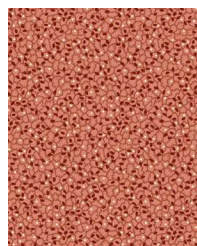
**5220-01**  
1-5/8 YARDS



**5221-01**  
3/8 YARD



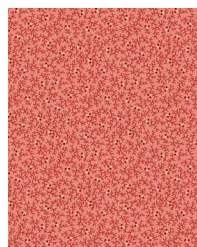
**5222-01**  
1/2 YARD



**5222-11**  
3/8 YARD



**5223-01**  
1-1/8 YARDS



**5223-12**  
3/8 YARD



**5224-01**  
1/4 YARD



**5224-01**  
5-1/2 YARDS  
(backing)