

Cutting out the Cross X Blocks

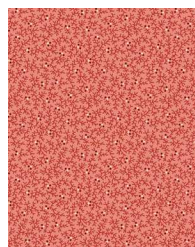
At the end of these directions are three different options for constructing one of the Cross X blocks — rotary cutting, templates, and foundation pattern — all generated from Electric Quilt 5.

Rotary Cutting Notes: Piece “A” would be most accurate when cut from a template. Rotary cut a strip 2-5/8” wide, then use the “A” template to get the exact shape.

Foundation Pattern Notes: The entire pattern does not fit on one page, because this is a 9-1/2” x 9-1/2” unfinished block on 8-1/2” x 11” paper. Before you cut out the foundation patterns, line up the two pages with a light box or in front of a window. Use the long and short dashed lines as your guide and tape the two pages together to get the full pattern.



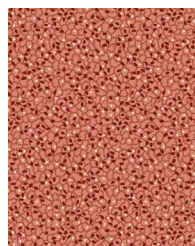
5220-01
Background Triangles
Cut (7) 7-1/4” strips.
Cut 35 squares at 7-1/4” x 7-1/4”. Cut on each diagonal.



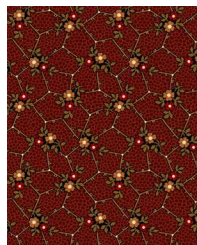
5223-12
Total Blocks: 4
Cut (3) 2-5/8” strips.
Cut 16 “A” templates.



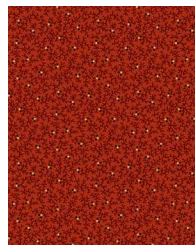
5216-01
Center On-Point Squares
Cut (3) 2-5/8” strips.
Cut 35 squares at 2-5/8” x 2-5/8”.



5222-11
Total Blocks: 4
Cut (3) 2-5/8” strips.
Cut 16 “A” templates.



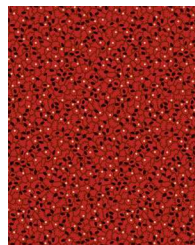
5217-11
Total Blocks: 3
Cut (2) 2-5/8” strips.
Cut 12 “A” templates.



5223-01
Total Blocks: 6
Cut (4) 2-5/8” strips.
Cut 24 “A” templates.



5224-01
Total Blocks: 3
Cut (2) 2-5/8” strips.
Cut 12 “A” templates.



5222-01
Total Blocks: 6
Cut (4) 2-5/8” strips.
Cut 24 “A” templates.



5221-01
Total Blocks: 4
Cut (3) 2-5/8” strips.
Cut 16 “A” templates.



5219-01
Total Blocks: 5
Cut (3) 2-5/8” strips.
Cut 20 “A” templates.