

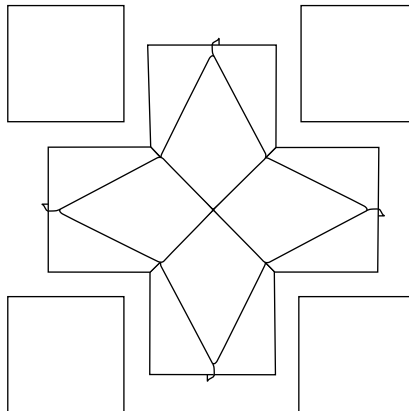
Cutting Chart

Fabric	Strip/ First Cut	Pieces/ Second Cut
Blue Gradated	Darkest, 7 ¹ / ₄ " strip	16 Star Point Frame pieces
<i>Cut from Lengthwise Grain</i>	Dark, 7 ¹ / ₄ " strip	12 Star Point Frame pieces
	Lightest, 2 ¹ / ₂ " strip	16 squares, 2 ¹ / ₂ " each
	Light, 2 ¹ / ₂ " strip	12 squares, 2 ¹ / ₂ " each
	Light Medium, 4 ¹ / ₂ " strip	32 rectangles, 2 ¹ / ₂ " x 4 ¹ / ₂ "
	Medium, 4 ¹ / ₂ " strip	24 rectangles, 2 ¹ / ₂ " x 4 ¹ / ₂ "
		5 squares, 4 ¹ / ₂ " each
	Medium Dark, 4 ¹ / ₄ " strip	28 Star Pane pieces
Green Gradated	Darkest, 7 ¹ / ₄ " strip	16 Star Point Frame pieces
<i>Cut from Lengthwise Grain</i>	Dark, 7 ¹ / ₄ " strip	12 Star Point Frame pieces
	Lightest, 2 ¹ / ₂ " strip	16 squares, 2 ¹ / ₂ " each
	Light, 2 ¹ / ₂ " strip	12 squares, 2 ¹ / ₂ " each
	Light Medium, 4 ¹ / ₂ " strip	32 rectangles, 2 ¹ / ₂ " x 4 ¹ / ₂ "
	Medium, 4 ¹ / ₂ " strip	24 rectangles, 2 ¹ / ₂ " x 4 ¹ / ₂ "
		5 squares, 4 ¹ / ₂ " each
	Medium Dark, 4 ¹ / ₄ " strip	28 Star Pane pieces
Yellow Gradated	Darkest, 7 ¹ / ₄ " strip	8 Star Point Frames
<i>Cut from Lengthwise Grain</i>	Dark, 7 ¹ / ₄ " strip	8 Star Point Frames
	Lightest, 2 ¹ / ₂ " strip	8 squares, 2 ¹ / ₂ " each
	Light, 2 ¹ / ₂ " strip	6 squares, 2 ¹ / ₂ " each
	Light Medium, 4 ¹ / ₂ " strip	16 rectangles, 2 ¹ / ₂ " x 4 ¹ / ₂ "
	Medium, 4 ¹ / ₂ " strip	16 rectangles, 2 ¹ / ₂ " x 4 ¹ / ₂ "
	Medium Dark, 4 ¹ / ₄ " strip	16 Star Pane pieces
Purple Gradated	Darkest, 7 ¹ / ₄ " strip	8 Star Point Frames
<i>Cut from Lengthwise Grain</i>	Dark, 7 ¹ / ₄ " strip	8 Star Point Frames
	Lightest, 2 ¹ / ₂ " strip	8 squares, 2 ¹ / ₂ " each
	Light, 2 ¹ / ₂ " strip	6 squares, 2 ¹ / ₂ " each
	Light Medium, 4 ¹ / ₂ " strip	16 rectangles, 2 ¹ / ₂ "
	Medium, 4 ¹ / ₂ " strip	16 rectangles, 2 ¹ / ₂ " x 4 ¹ / ₂ "
	Medium Dark, 4 ¹ / ₄ " strip	16 Star Pane pieces
Red Gradated	Darkest, 7 ¹ / ₄ " strip	8 Star Point Frames
<i>Cut from Lengthwise Grain</i>	Dark, 7 ¹ / ₄ " strip	4 Star Point Frames
	Lightest, 2 ¹ / ₂ " strip	8 squares, 2 ¹ / ₂ " each
	Light, 2 ¹ / ₂ " strip	4 squares, 2 ¹ / ₂ " each
	Light Medium, 4 ¹ / ₂ " strip	16 rectangles, 2 ¹ / ₂ " x 4 ¹ / ₂ "
	Medium, 4 ¹ / ₂ " strip	8 rectangles, 2 ¹ / ₂ " x 4 ¹ / ₂ "
		2 squares, 4 ¹ / ₂ " each
	Medium Dark, 4 ¹ / ₄ " strip	12 Star Pane pieces
Blue to Red Variegated	8 strips, 4 ¹ / ₂ " x 42"	8 cuts of eight 4 ¹ / ₂ " squares
<i>Cut from Crosswise Grain</i>		<i>Keep in order</i>
Yellow to Turquoise Variegated	4 strips, 4 ¹ / ₂ " x 42"	7 cuts of four 4 ¹ / ₂ " squares
<i>Cut from Crosswise Grain</i>	Start cutting these strips in the Gold section. Refer to cover photo.	<i>Keep in order</i>

Constructing the Floating Star Blocks

Refer to the cover photograph and layout diagram to layout the Floating Star units. Add the Blue to Red variegated 4¹/₂" squares to the layout. To the Floating Star units in the four by four rows, add the corner squares, making sure to keep the variegation going in the same direction (**See Illustration I-12**). Using inset seams, pin ¹/₄" in from each edge and sew between the pins, backstitching at the beginning and end.

I-12



Constructing the Top

Referring to the cover photograph and layout diagram, layout the Floating Star blocks, the remaining Floating Star units, the secondary Yellow to Turquoise variegated 4¹/₂" squares and the light red, blue and green squares. Use inset seams as in the previous step to stitch the Floating Star units and the background squares to the top, starting in one corner and working across the quilt.