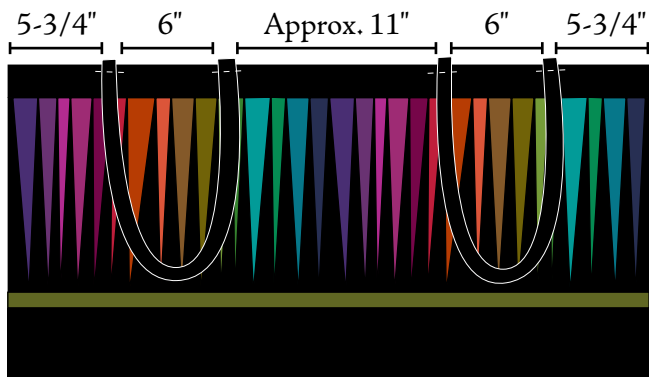
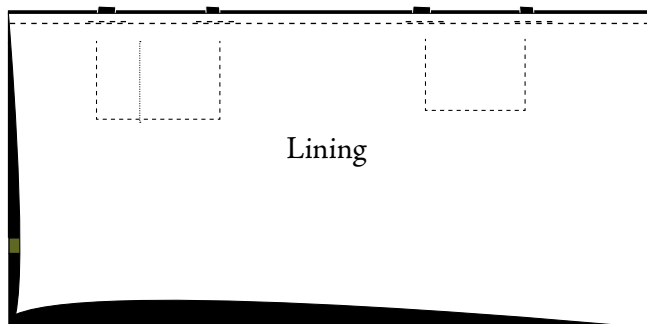


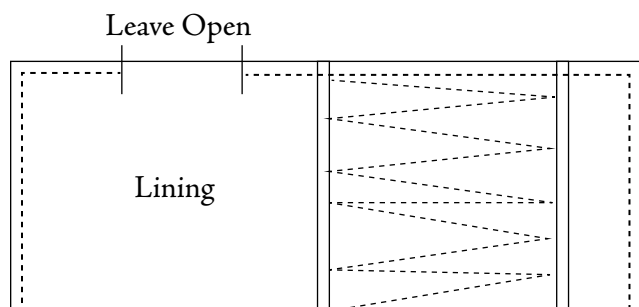
9. Pin the straps to the quilted tote body. Baste stitch to body if desired using less than 1/4" seam allowance. The spacing described in the diagram below is approx as the quilted tote piece may vary in size some. Add tab for keys, zipper (see special touches)... if desired.



10. Pin the lining to the tote shown above, right sides together. Sew just along the top edge. Stitch again at the handles to reinforce.

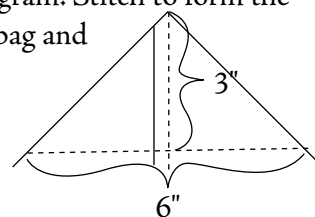


11. Open up and refold so the lining and pieced body are against their own right sides. Be sure the handles are out of the way of the impending seam allowances. Sew along all three raw edges of the bag leaving approx. 3" opening for turning right side out later.



12. SHAPE THE TOTE CORNERS:

Fold the bottom of the tote and lining at each corner as shown in diagram. Stitch to form the tote shape on the two bag and two liner corners.



13. Turn right side out pulling all pieces through the opening. Pull tote into shape tucking the lining into the body of the tote.

14. Top stitch around the top rim of the tote. Whip stitch the opening closed.

SPECIAL TOUCHES

SWIVEL HOOK: Make a strap for the key hook by cutting a 2-1/2" x 4" piece of fabric 17 (same fabric as top band). Fold and sew in the same way the straps were made (step 8) only this time without batting. Thread the fabric through the key hook base and pin in place beside one of the straps (before adding lining).



Tab for Keys

ZIPPER: Cut two 6-1/2" x 15" pieces from lining fabric (18). Fold each strip in half lengthwise. Sew 1/4" seam on each short end. Turn right side out. Press. Place the fold of each strip onto each side of a 14" separating zipper. Top stitch. Pin the raw edges of the strips to opposing sides of the bag centering over the handles. Proceed to step 11.

